



# Tuscan Water District

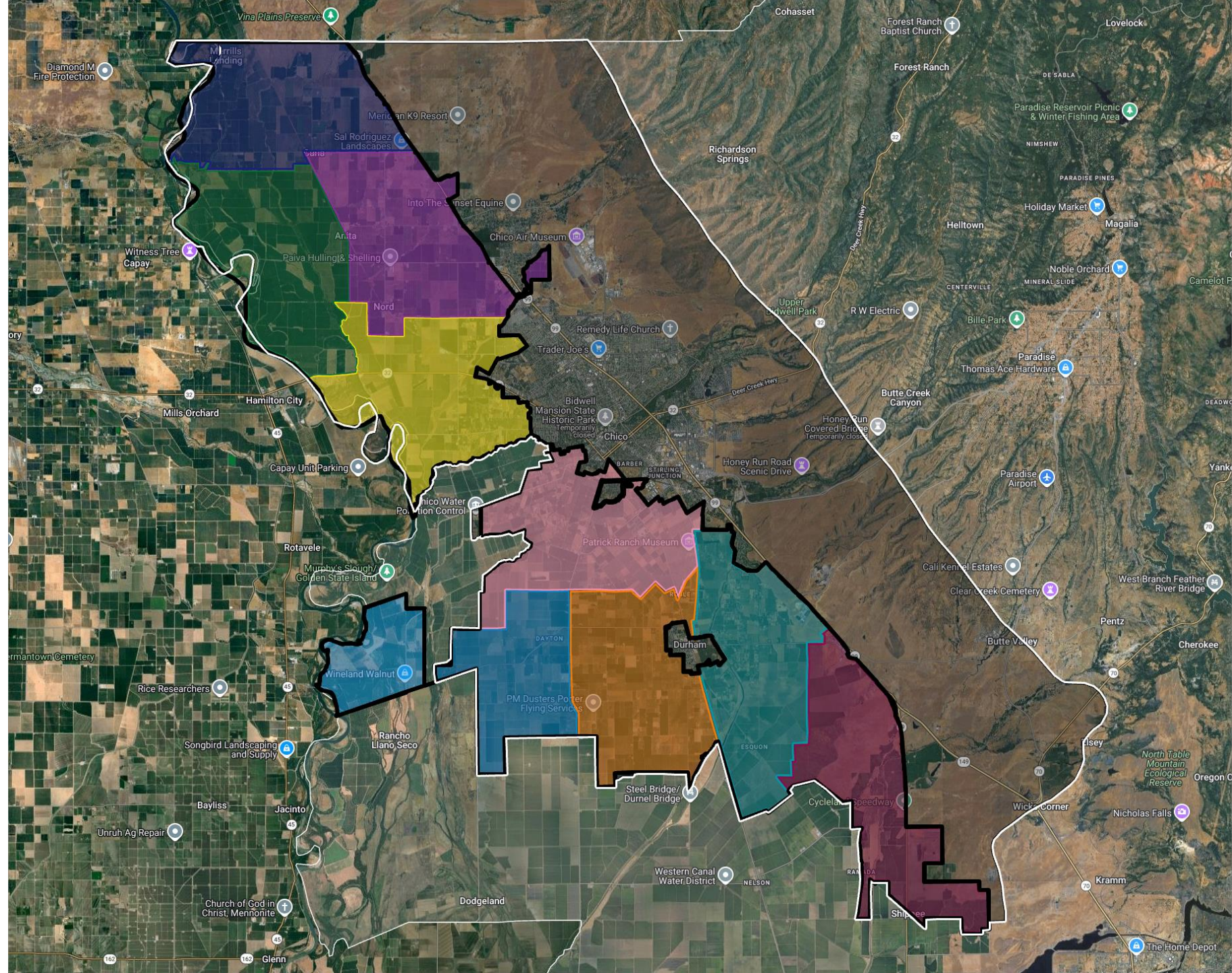
Update to the Vina GSA and RCRD GSA  
Boards of Directors

March 11, 2026 | Tovey Giezentanner, General Manager

**Vina GSA =**  
White Boundary

**TWD = Black**  
Boundary (west  
of Hwy 99)

**TWD Divisions =**  
multi-colored  
areas



## 2024-2026 TWD Activities (Highlights)

Area	Status
<b>LAFCO Conditions</b>	MSR application submitted; electoral divisions established; MOUs executed with all three GSAs (January 2025)
<b>Prop 218</b>	Election held January 2025 — 87.61% in favor, 63% turnout; Year 1 rate set at \$6.45/acre
<b>Financial Setup</b>	Bank account, EIN, D&O and liability insurance established; assessments placed on county tax roll (~\$428K expected); Investment Policy adopted
<b>Governance</b>	Mission statement adopted; Conflict of Interest and Sponsorship policies adopted; bylaws being finalized; transitioning to permanent staffing and office space
<b>Elections</b>	First by-division elections November 2026 (5 of 9 seats); election info page live on TWD website
<b>Recharge &amp; Surface Water</b>	Monitoring Vina GSA pilot recharge projects; Rock Creek/Kiefer Slough analysis underway; reviewing Water & Land Solutions feasibility study; facilitating PID pilot transfer; two Ad Hoc Committees formed early 2026 to advance shovel-ready concepts ahead of Prop 4 funding
<b>GSP Coordination</b>	Monitoring Annual Reports and GSP Evaluation (due 2027); raised data and methodology questions via TAC on water use estimates, storage change modeling, and ET calculations

# Structured Pipeline with Multiple Public Checkpoints



**Bottom Line:** Exploring a project is not the same as building it.  
No project advances to construction without GSA and CEQA review.



# Questions?

[www.tuscanwaterdistrict.org](http://www.tuscanwaterdistrict.org)

530-487-0139