

Vina Subbasin Surface Water Supply Project

Ad Hoc Committee

March 17, 2025

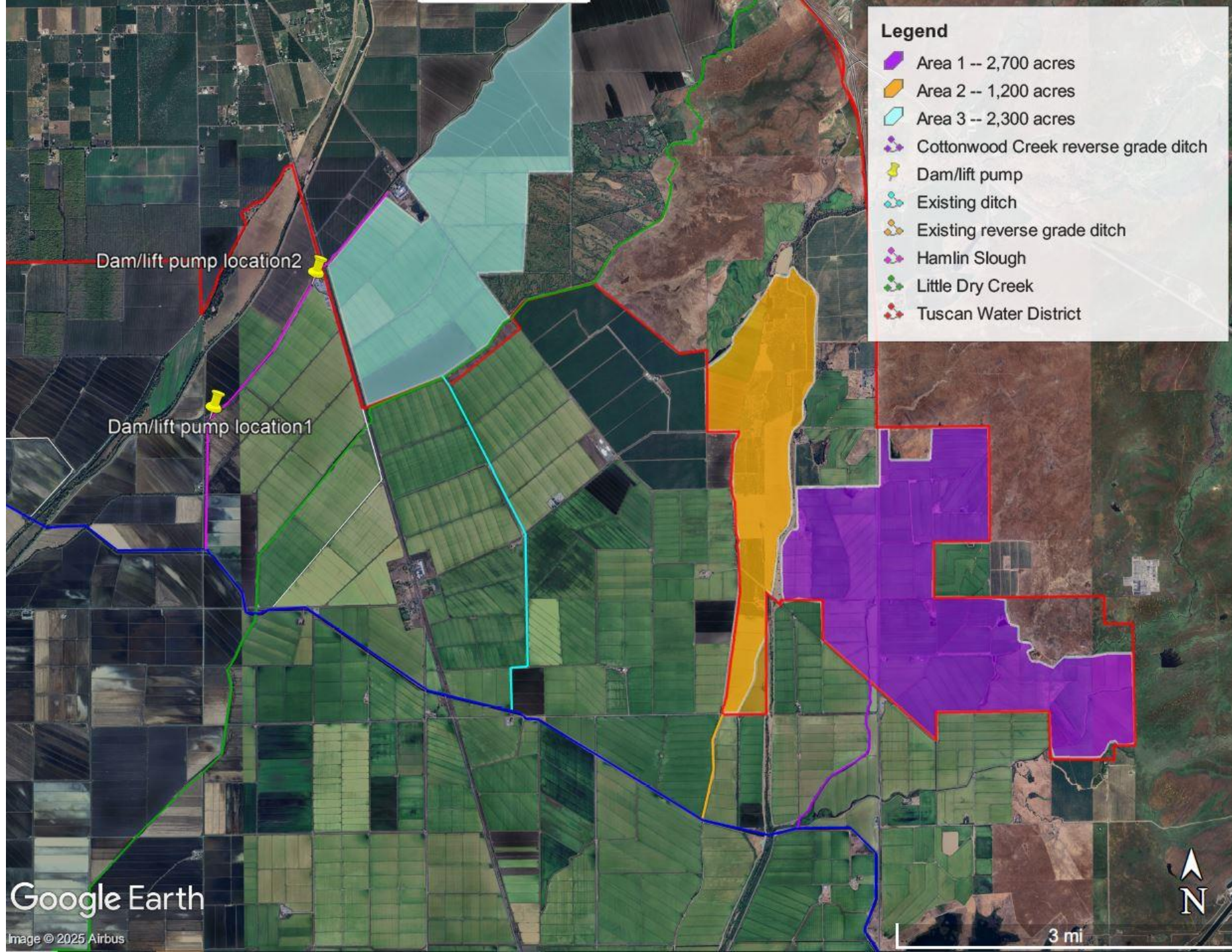
Jenny Scheer

Water and Land Solutions, LLC

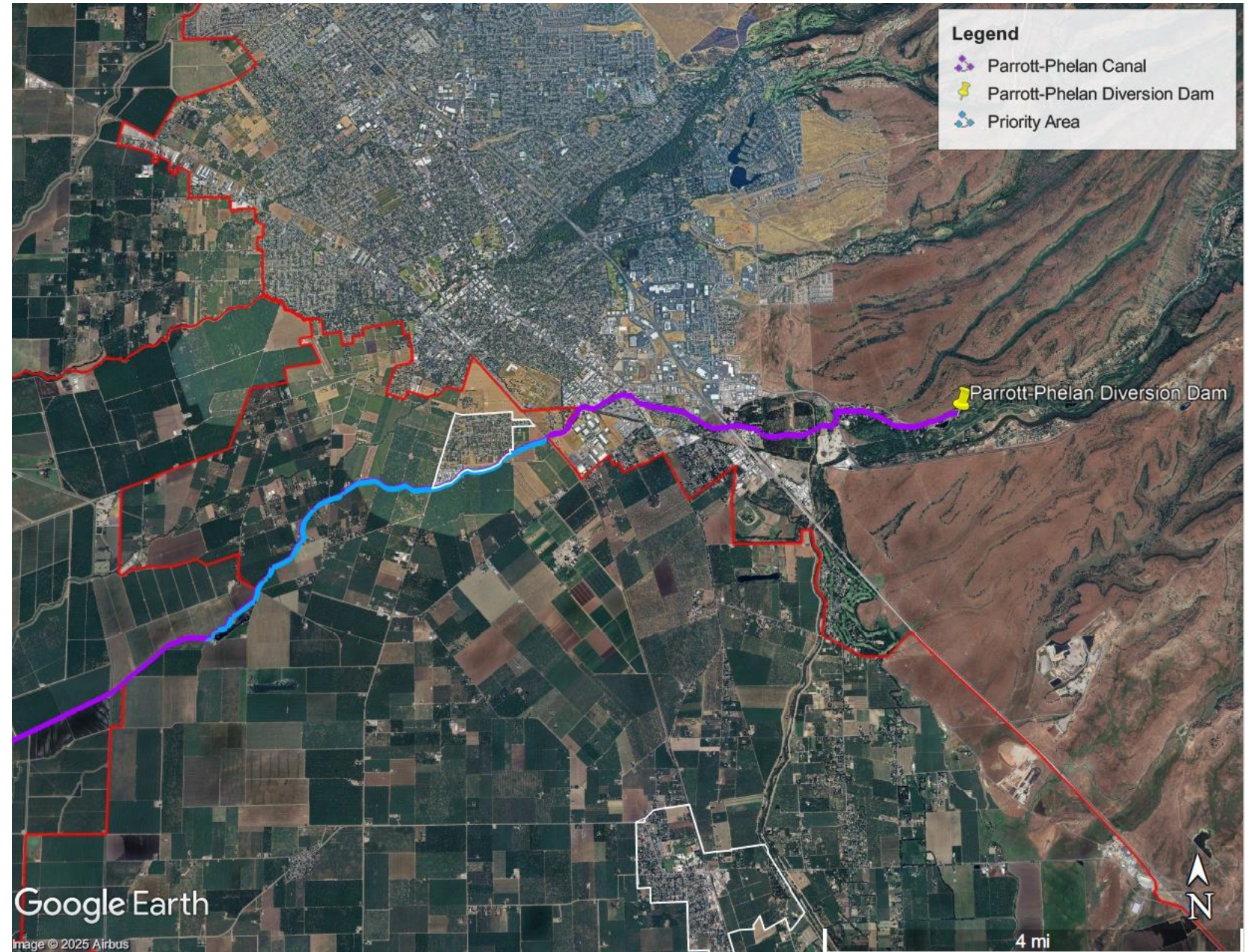


Projects considered

Project	Feasibility	Est. Cost
Feather River -- South Vina extension	Feasible	<\$5 million
Ridge to Valley	Feasible	\$5 million
Feather River -- Sacramento exchange	Feasible	>\$15 million
Feather River -- Butte Creek diversion	Infeasible	N/A

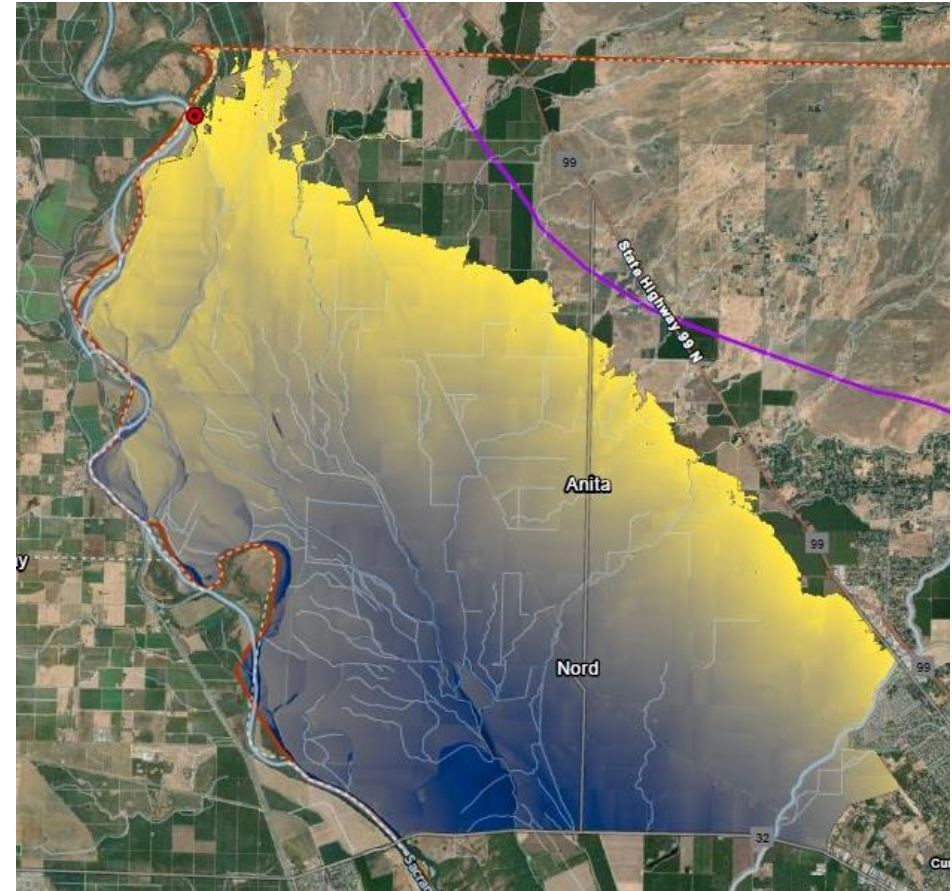


- 30 cfs capacity available in Parrott-Phelan Canal
- 9,000 AF over the irrigation season
- Option 1: Deliver to farmland SW of Chico
- Option 2: Divert further downstream

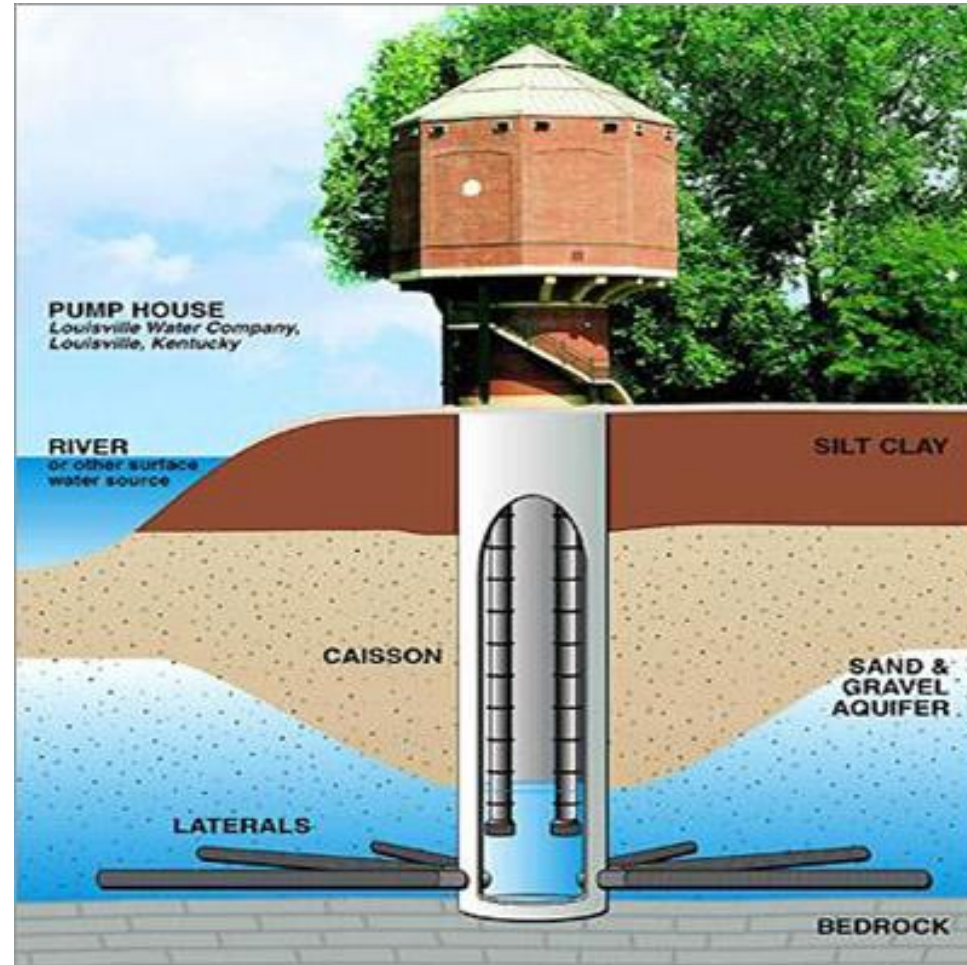


Feather River -- Sacramento exchange

- Water from Feather River or Lake Oroville
- Exchanged for diversion off the Sacramento River
- Diverted using a [radial well](#)
- New pipelines or canals for distribution in the northern Vina Subbasin
- On-farm irrigation system improvements



Radial well



Feather River -- Butte Creek diversion

- Water from Feather River or Lake Oroville
- Conveyed for diversion off Butte Creek
- Via Pacific Gas & Electric's (PG&E) Hendricks Canal



Projects considered

Project	Feasibility	Est. Cost
Feather River -- South Vina extension	Feasible	<\$5 million
Ridge to Valley	Feasible	\$5 million
Feather River -- Sacramento exchange	Feasible	>\$15 million
Feather River -- Butte Creek diversion	Infeasible	N/A